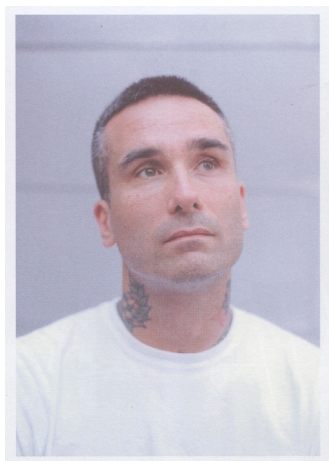


# Artists



## Stefan Brüggemann

Stefan Brüggemann (1975, Born in Mexico City, Based in London and Mexico City) develops a conceptual approach to the artistic process, which he explores with a critical and often provocative and ironical attitude, questioning its inner activity and contemporary societies. He works with a wide range of media, creating large installations, neon works, paintings and photographs. Brüggemann's work is a unique combination between theoretical concepts (mainly grounded on post-structuralism and deconstructionism) and pop imagery, inspired nihilism (anti-conformism, provocation and cynicism), which are often expressed through tautological premises, not only within themselves but also in relation to the context in which they are conceived and inserted. Brüggemann's main strategy is to insert a certain pop sensibility into conceptual practices. Brüggemann's main strategy is to insert a certain pop sensibility into conceptual practices.



## Gardar Eide Einarsson

Gardar Eide Einarsson (1976, born in Oslo and currently lives and works in Tokyo) He received his education from the National Academy of Fine Art, Bergen; Staatliche Hochschule für Bildende Kunst – Städelschule – Frankfurt and the Whitney Museum Independent Study Program in New York City.

Einarsson's work is represented in a number of public collections including the Museum of Modern Art (MoMA), New York; SFMoMA San Francisco Museum of Modern Art, San Francisco; Museum für Moderne Kunst Frankfurt (MMK), Moderna Museet, Stockholm and the Norwegian National Museum of Art, Oslo.



## Yuichi Hirako

Yuichi Hirako (1982, Born in Okayama, Based in Tokyo) graduated from Wimbledon College of Art, UK, with a Fine Arts degree in painting. The central theme of his artistic practice is about the coexistence of plants, nature, and humans and the ambiguity and questions arising from the relationship. Deriving from a sense of strangeness felt from the concept of humans controlling plants to create "nature", as seen in indoor plants and street trees, he explores the boundaries between nature and humans in modern society through his works.

Hirako primarily paints, but his works vary in a wide range of mediums such as drawing, sculpture, installation, sound performance, and more. He has been actively exhibiting in Japan and internationally, including shows in Denmark, the Netherlands, Singapore, Taiwan, and Korea.

# Artists



## Mariko Kobayashi

Mariko Kobayashi (1987, Born in Osaka, Based in Saitama) 2012 Masters of Fine Arts [Textile design], Tama Art University, Tokyo, Japan. Utilizing textile techniques such as weaving, dyeing, knitting, and stitching, Kobayashi depicts different connections that exist in the world. Her artistic concept is based on the awareness of being conscious in the present moment, as we continue our life as mortal beings. Kobayashi's work traces the long journey of how the flesh, the physical body that separates humans and animals, returns to the earth and continues a new life after reincarnation. Her exploration attempts to unravel essential form of life, which is rendered in chaos created by overlaying colors and shapes of different materials.



## Tony Matelli

Tony Matelli (1971, Born in Chicago, Based in New York) is an American artist working predominantly in the field of sculpture. The artist frequently focuses on themes of time, ambivalence, banality, and wonder. In Matelli's work the physical laws of objects are often reversed, upended or atomized, and with these deft manipulations of matter and gravity come profound reorientations in perspective and ultimately, states of being.



## Tomokazu Matsuyama

Tomokazu Matsuyama (1976, Born in Gifu, Based in New York) moved to the United States in 2002, after graduating from Sophia University. He received his MFA in Communications Design from the Pratt Institute, New York. Matsuyama's works include painting, sculpture as well as public art installation and respond to his own bi-cultural experience of growing up between Japan and America by bringing together aspects of both Eastern and Western aesthetic system and reflect the changing modern society in the informatization. Numerous exhibitions have been held in major cities in the United States such as New York, Washington DC, San Francisco, Los Angeles, Japan, Dubai, Shanghai, Hong Kong, Taipei, Luxemburg, and other galleries, museums, and university facilities around the world. His works are in the permanent collections of LACMA, Asian Art Museum in San Francisco, Long Museum in China, the Royal Family, Bank of Sharjah Collection, Dubai, UAE, Microsoft Collection and more. From 2012 to May 2017 he was an adjunct professor at the School of Visual Arts (SVA). In 2020, he designed and supervised the community art space at JR Shinjuku Station East Square and installed 7m-tall sculpture. In 2021, he was featured on NHK's "Nichiyo Bijutsukan", Japan's longest running weekly arts TV program and his international activities and growing profile were well valued. He currently lives and works in Greenpoint, Brooklyn, New York.